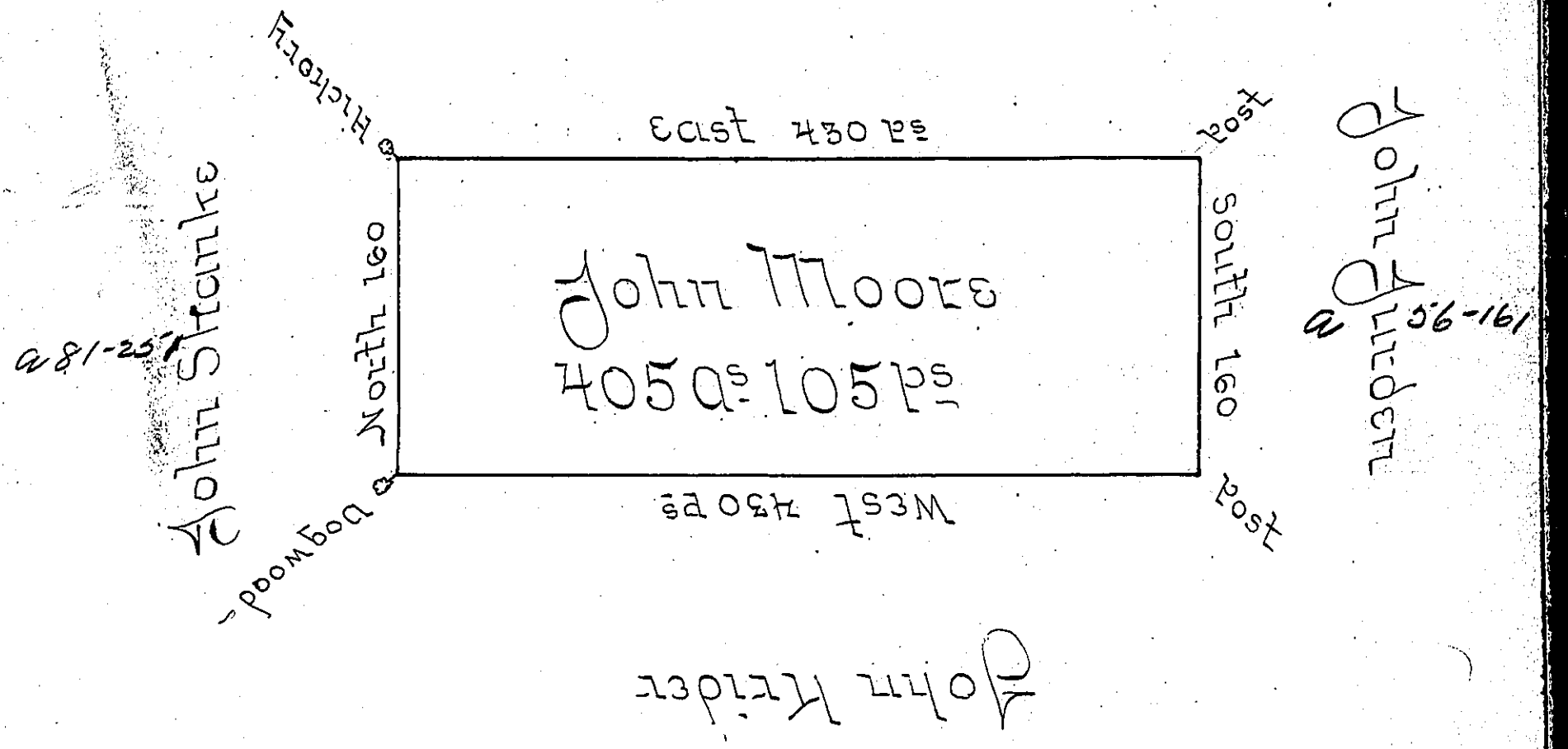


Old Surveys



Situated on the Waters of Two lick Creek including many Springs in Wheatfield Township, Westmoreland County Containing 405 Acres & 105 perches & allowance of 6 PCT for Roads Highways &c. Surveyed for John Moore the 18 day of Nov^r 1794 on warrant dated the 3^d day of May 1793.

James Ross US

To Daniel Broadhead Esq^r S^r.

IN TESTIMONY that the above is a copy of the original remaining on file in the Department of Internal Affairs of Pennsylvania, made conformably to an Act of Assembly approved the 16th day of February, 1833, I have hereunto set my Hand and caused the Seal of said Department to be affixed at Harrisburg, this fourth day of February 1902.

James W. Latta
Secretary of Internal Affairs.